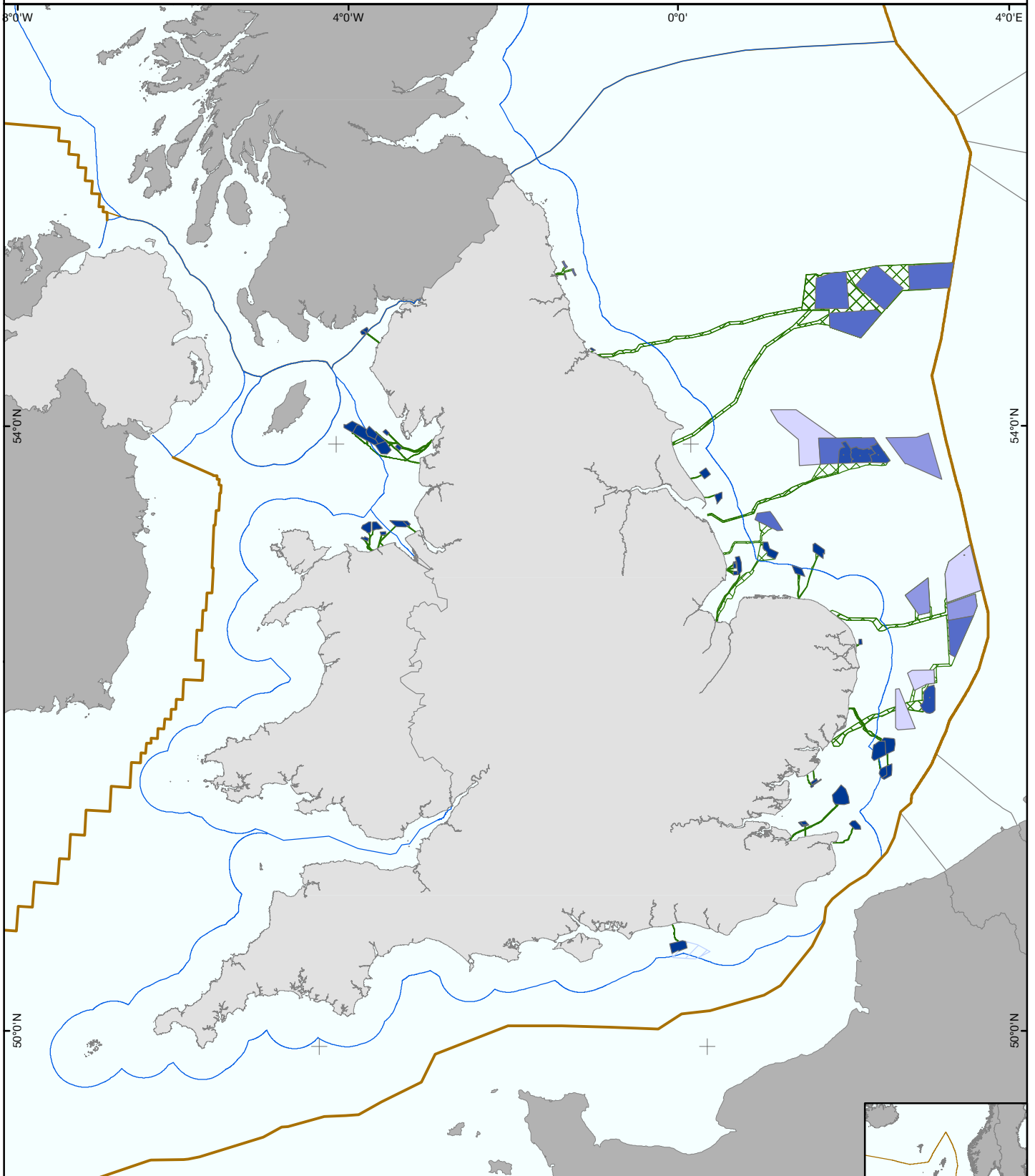


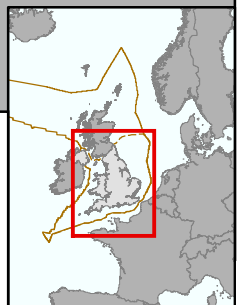
Offshore Wind



- | Offshore Wind Activity | |
|---|--|
| Active/In Operation | Pre-planning Application |
| Under Construction | Area of Search |
| Consented | Wind Farm Export Cable Agreements |
| In Planning | |

- | Base Map |
|--|
| Territorial Waters Limit |
| UK Continental Shelf |
| International Median |

Note
 Agreements for Lease reserve exclusive property rights from The Crown Estate and projects are still subject to approval through the statutory consenting process. For Round 3 please refer to project developer websites for the latest status of planning activities.



GIS_2019_0108_11 v04	Scale 1:4,000,000 at A4			Date: 24/04/2019
Author: DB	QA: JS			