



33 BURY ST

ST JAMES'S

THE CROWN
 ESTATE
RESIDENCES

33 BURY ST
ST JAMES'S



33 BURY STREET IS A COLLECTION
OF SIX RESIDENCES TO RENT IN
AN HISTORIC BUILDING IN
THE HEART OF ST JAMES'S
GALLERY DISTRICT.

THOUGHTFULLY RESTORED,
WITH AN EYE FOR DETAIL, EACH
RESIDENCE IS A WORK OF ART.



Living on The Crown Estate.

The Crown Estate manages land and buildings across the country for the benefit of the nation. We have an extensive residential portfolio that includes St James's, Regent Street, Regent's Park and Kensington Palace Gardens and are proud to present some of the finest homes in London.

We have a clear vision for the future for the areas we manage and we are committed to ensuring they will always be distinctive places to live, work and visit. We do this by finding new ways to balance commercialism with careful stewardship and integrity, and incorporating the contemporary into places that are steeped in centuries of history. We always look to the future but at the same time respect our past.

Our ambition is to deliver elegant design, personalised service and attention to detail at every one of our properties, for every one of our residents.

Our heritage buildings are thoughtfully restored and our new developments are always entirely in keeping with the neighbourhood. Our interiors are a carefully considered balance of form and function, with a contemporary aesthetic and high quality finishes and fittings. Typically our residences are fully furnished, making moving in and setting up home easier.

Our dedicated Property Management team have a personal approach, meeting each resident on the first day of a new tenancy and providing ongoing support. Assistance may also be accessed via a help desk that is open 365 days a year.

Rose Barton (1856-1929)
St James's, Street looking towards St James's, Palace
Watercolour with bodycolour and pencil. 9 3/4 x 7 1/4 inches.
Signed and dated 1889. Artwork supplied by Chris Beetles Gallery,
8 & 10 Ryder Street, London SW1Y 6QB.



Top Deck chairs in St James's Park
 Middle Shopping in St James's
 Lower Dining at Aquavit, St James's Market
 Right St James's Square Gardens with a picnic from Fortnum & Mason

St James's is a true original, more than 300 years in the making.

St James's has its beginnings in 1661, when Henry Jermyn acquired the rights to build on the fields around St James's Palace in order to create residences for the aristocrats attending the Royal Court.

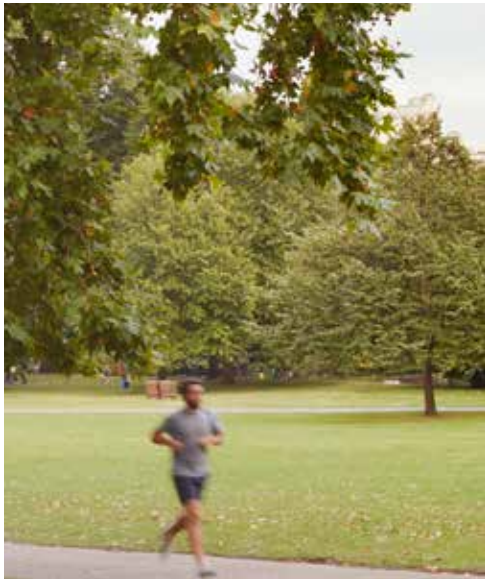
St James's has always attracted inventive minds, instinctive leaders and true adventurers and has been home to such notable residents as Isaac Newton, Ada Lovelace and Jimi Hendrix.

A sense of history permeates St James's. Whether walking though the parks, or experiencing the centuries-old architecture that has made this part of the capital so renowned, it is a uniquely pleasurable place to be. This might be Winston Churchill's wine supplier, or Frank Sinatra's shoemaker, but it is just as much yours.

In fact, St James's is changing more now than at any time in its history. Not only is there a wealth of new bars, coffee shops and restaurants, but the arrival of some of the world's most remarkable independent retailers means that London's original West End is once again one of its most satisfying, and surprising, places to shop.

To live in St James's is to experience past, present and future all at once, and to savour rare moments of tranquillity right in the centre of London.





Top Shopping at St James's Market
Middle Running in Green Park
Lower Coffee and cinnamon buns at Ole & Steen



Top London Fashion Week Men's catwalk on Jermyn Street
Middle Fine Mediterranean seafood at Milos
Lower Contemporary Nordic dining at Aquavit

Dining

The area around 33 Bury Street is home to some of London's best-loved institutions for eating and drinking. The Ritz, Le Caprice, the Wolseley, Angela Hartnett's Cafe Murano and that bastion of Britishness, Wiltons, sit alongside newer additions like 45 Jermyn Street.

To the east, St James's Market, developed by The Crown Estate, is the area's new destination for world-class contemporary dining. Here you will find Aquavit London, Japanese brasserie Anzu, Ikoyi and Duck and Waffle Local.

Shopping

For over 300 years, St James's has been one of a kind – London's home of the rare, the bespoke, the perfectly crafted, whether gentleman's clothing and accessories, sporting equipment, antiquarian books or food and wine. Today this is truer than ever.

Long established names, such as wine merchant Berry Bros. & Rudd, bootmaker John Lobb and shirt maker Turnbull & Asser have been joined by more contemporary offerings, including Dover Street Market on Haymarket, bookseller Maison Assouline on Piccadilly, and the Assos flagship cycling store in St James's Market.

There is simply nowhere like St James's.

Art

This is London's home of serious art. On Piccadilly, you will find the Royal Academy, while the Institute of Contemporary Arts causes a stir from the rather stately surroundings of the Mall. St James's is also the birthplace and headquarters of Christie's, the world's oldest and most prestigious fine art auctioneer.

A host of world-class private galleries include Colnaghi, the world's oldest commercial art gallery, the Chris Beetles Gallery, which draws people from around the world to see its vast array of illustrations, and the boundary-pushing White Cube.

Places

For one of London's most central locations, St James's is remarkably peaceful, with wide, uncrowded pavements and expanses of green space. The neighbourhood is bordered by Royal Parks – Green Park to the west, and tranquil St James's Park to the south.

St James's Square Gardens provide another pocket of green at the centre. Here you will find the London Library, another venerable St James's institution.

Commissioned by King Henry VIII, St James's Palace was the scene of some of the most important events in royal history.

Restaurants

- 1 Cafe Murano St James's
- 2 The Wolseley
- 3 Anzu
- 4 Aquavit London
- 5 Duck and Waffle Local
- 6 Franco's
- 7 Le Caprice
- 8 Milos
- 9 Ole & Steen
- 10 Ikoyi
- 11 Urban Tea Rooms

Retail

- 1 Paul & Shark
- 2 Aquascutum
- 3 Maison Assouline
- 4 Dover Street Market
- 5 Assos of Switzerland
- 6 Dunhill
- 7 Fortnum & Mason
- 8 Berry Bros. & Rudd
- 9 Turnbull & Asser
- 10 John Lobb
- 11 Smeg
- 12 Tricker's
- 13 Jigsaw, St James's Emporium
- 14 Paxton & Whitfield
- 15 Arc'teryx

Galleries

- 1 Chris Beetles Gallery
- 2 White Cube
- 3 Institute of Contemporary Arts
- 4 Christie's London
- 5 Moretti Fine Art
- 6 David Gill
- 7 The Sladmore Gallery
- 8 Colnaghi
- 9 Royal Academy of Arts
- 10 Skarstedt Gallery
- 11 Illustrationcupboard Gallery
- 12 St James's Market Pavilion
- 13 Alan Cristea Gallery
- 14 Panter & Hall

Lifestyle/Culture

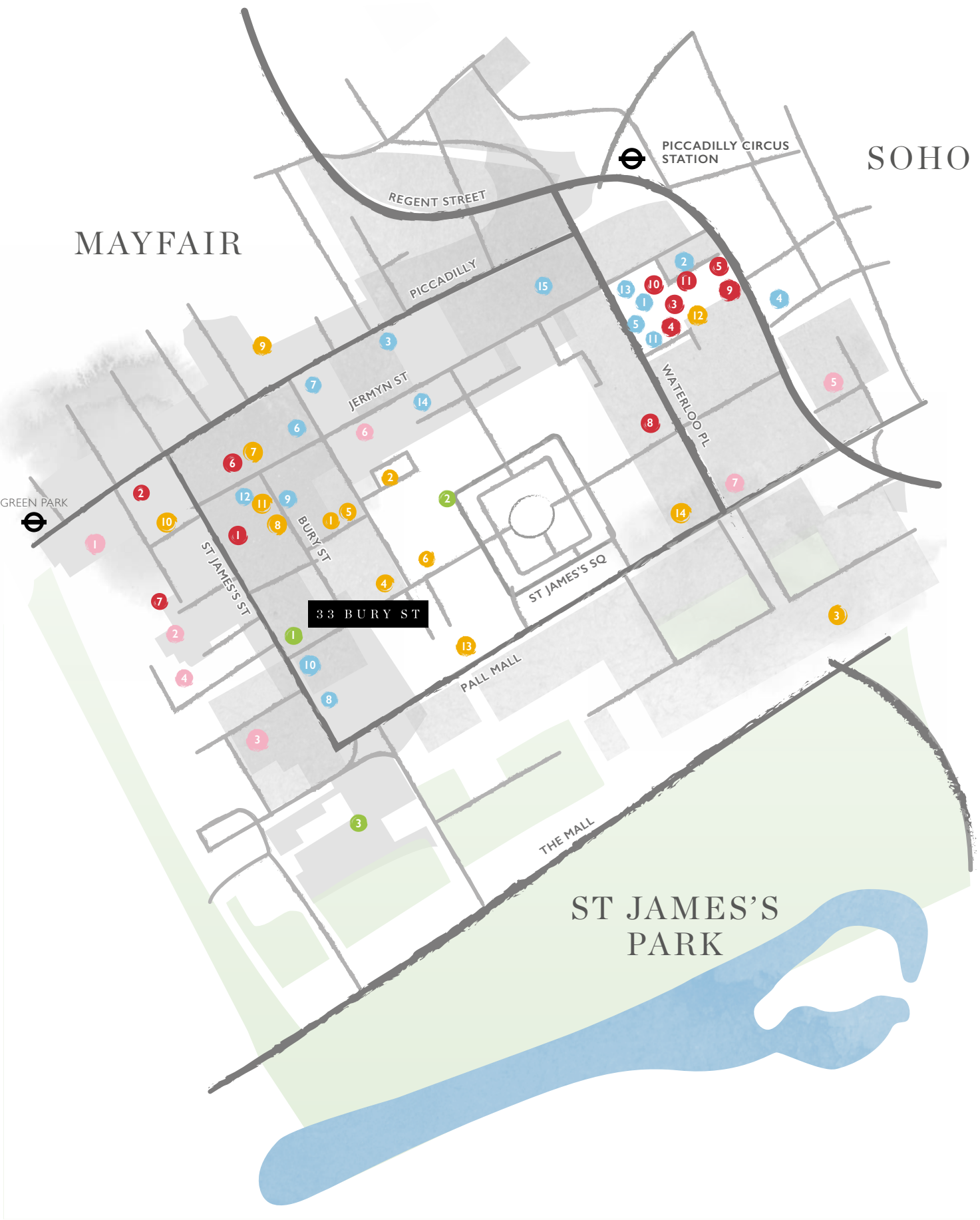
- 1 Equinox Gym
- 2 The London Library
- 3 St James's Palace

Hotels

- 1 The Ritz London
- 2 St James's Hotel
- 3 Dukes Hotel
- 4 The Stafford London
- 5 Haymarket Hotel
- 6 The Cavendish London
- 7 Sofitel London St James



Lesley Fotherby
Towards Buckingham Palace
Watercolour. 13 3/4 x 19 1/4 inches. Artwork supplied by
Chris Beetles Gallery, 8 & 10 Ryder Street, London SW1Y 6QB.





WITH JUST SIX FULLY
FURNISHED HOMES
AVAILABLE TO LEASE,
33 BURY STREET IS A RARE
ADDITION TO THE CROWN
ESTATE RESIDENCES IN
ST JAMES'S.

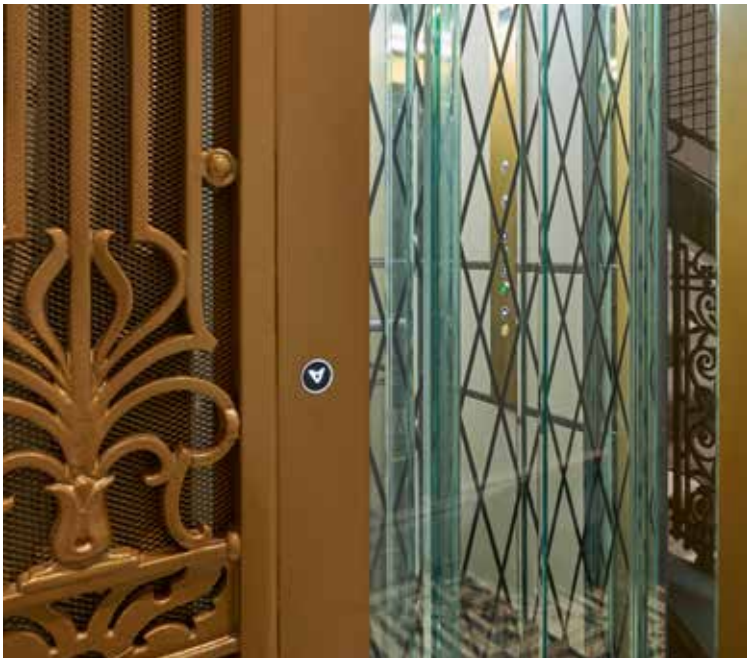


Relaxed grandeur.

33 Bury Street is located right in the heart of St James's, a stone's throw from both Jermyn Street and St James's Street.

The building, which is Grade II listed, was constructed in 1901 by Robert J. Worley. Its exterior is full of character, with a terracotta façade and beautifully proportioned leaded bay windows. Rather like St James's itself, 33 Bury Street is a place of relaxed grandeur – an intricate mosaic parades down the lobby and the roof is crowned with lattice brickwork chimneys. Enter through the front door and you will be greeted by a birdcage lift, at the end of the panelled lobby.

Inspired by the surroundings, the residences at 33 Bury Street have been conceived as collection pieces for those with an eye for art and craftsmanship. Led by interior designers Morpheus, each has been sensitively restored to meet the demands of contemporary living while showcasing the original period features. From the lighting systems to the marble bathrooms, each layer of 21st-century luxury has been carefully selected to sit alongside the historical features such as the original ironmongery and cornicing.



Left 33 Bury Street façade

Right 33 Bury Street birdcage lift



Above Living room



The interior draws inspiration from the building as well as the surrounding area. The master bedroom wardrobe handles are shaped as per the motif found in the leaded bay windows. The reception armchairs are upholstered in structural pinstripe wool and the contemporary detailing on the master bedroom headboard takes inspiration from the brogue shoe. The fabric palette of cool greys and rich blues references elements found in a Jermyn Street clothiers.



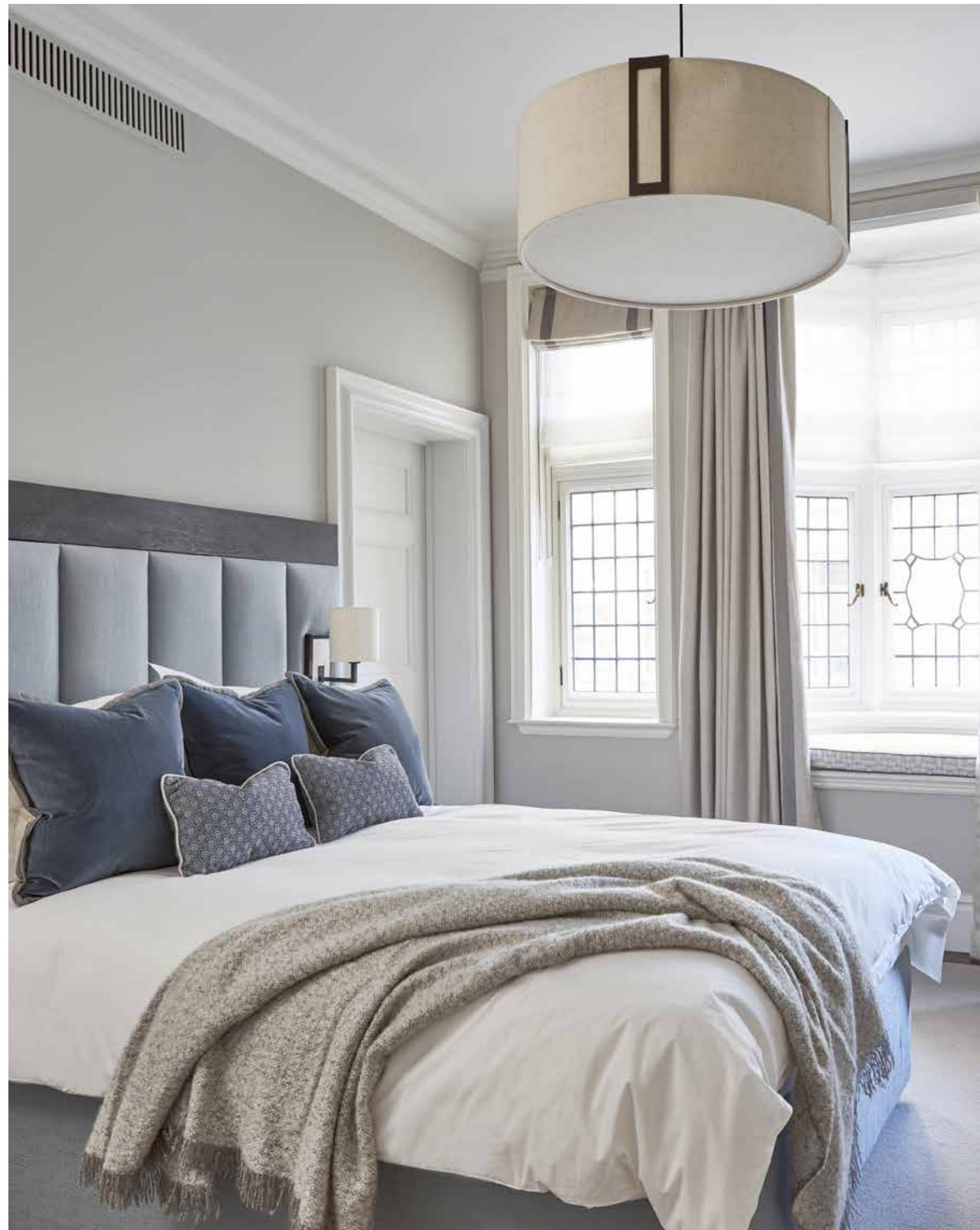
Left Dining room and open kitchen

Above Decorative wardrobe door handles



Above Master bathroom

Right Bedroom





Above Entrance hall



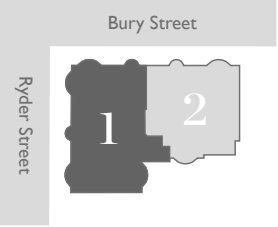
Apartment 1 – Second Floor

3 Bed / 3 Bath / Terrace

Internal Area	149m ²	1,599ft ²
---------------	-------------------	----------------------

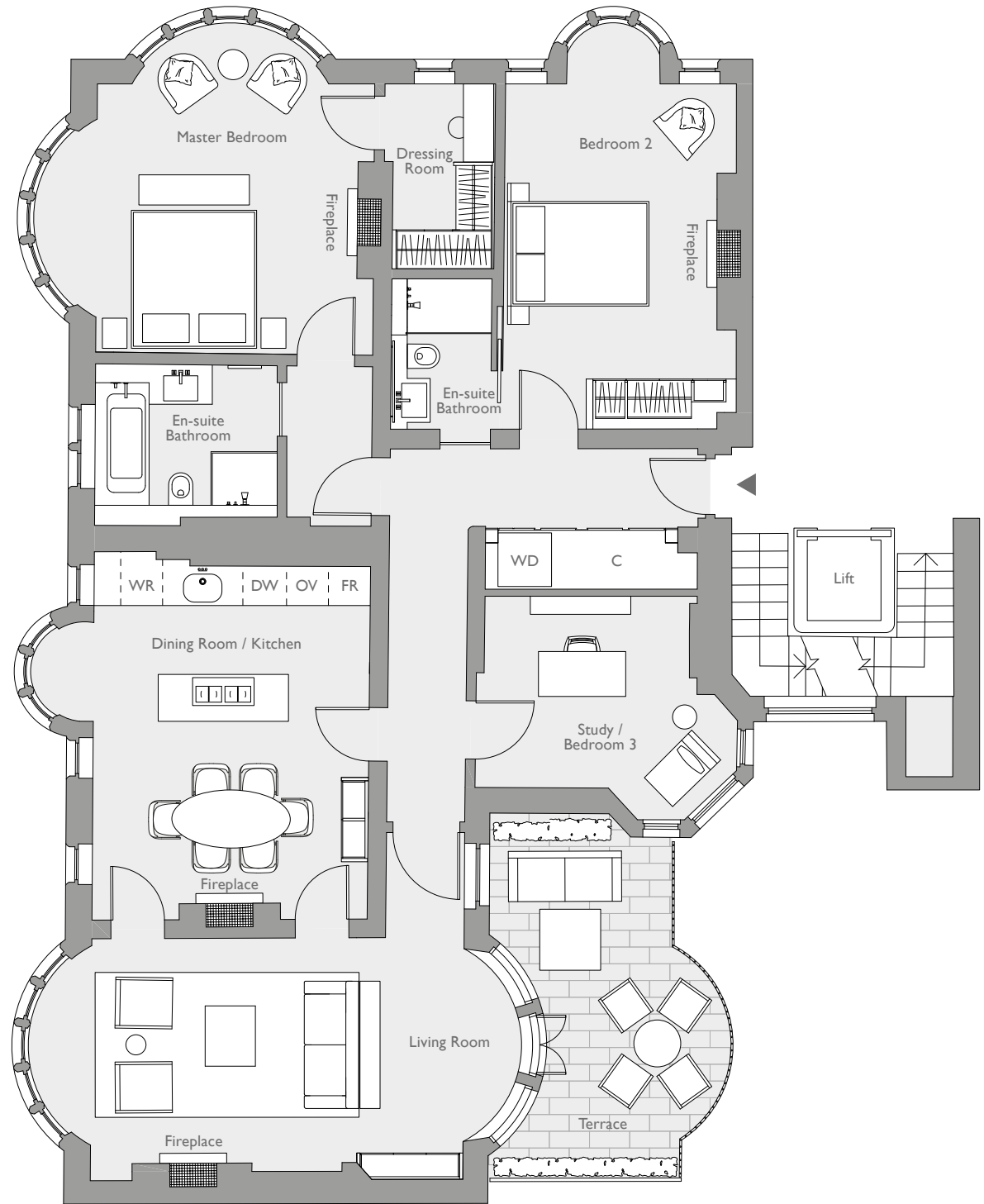
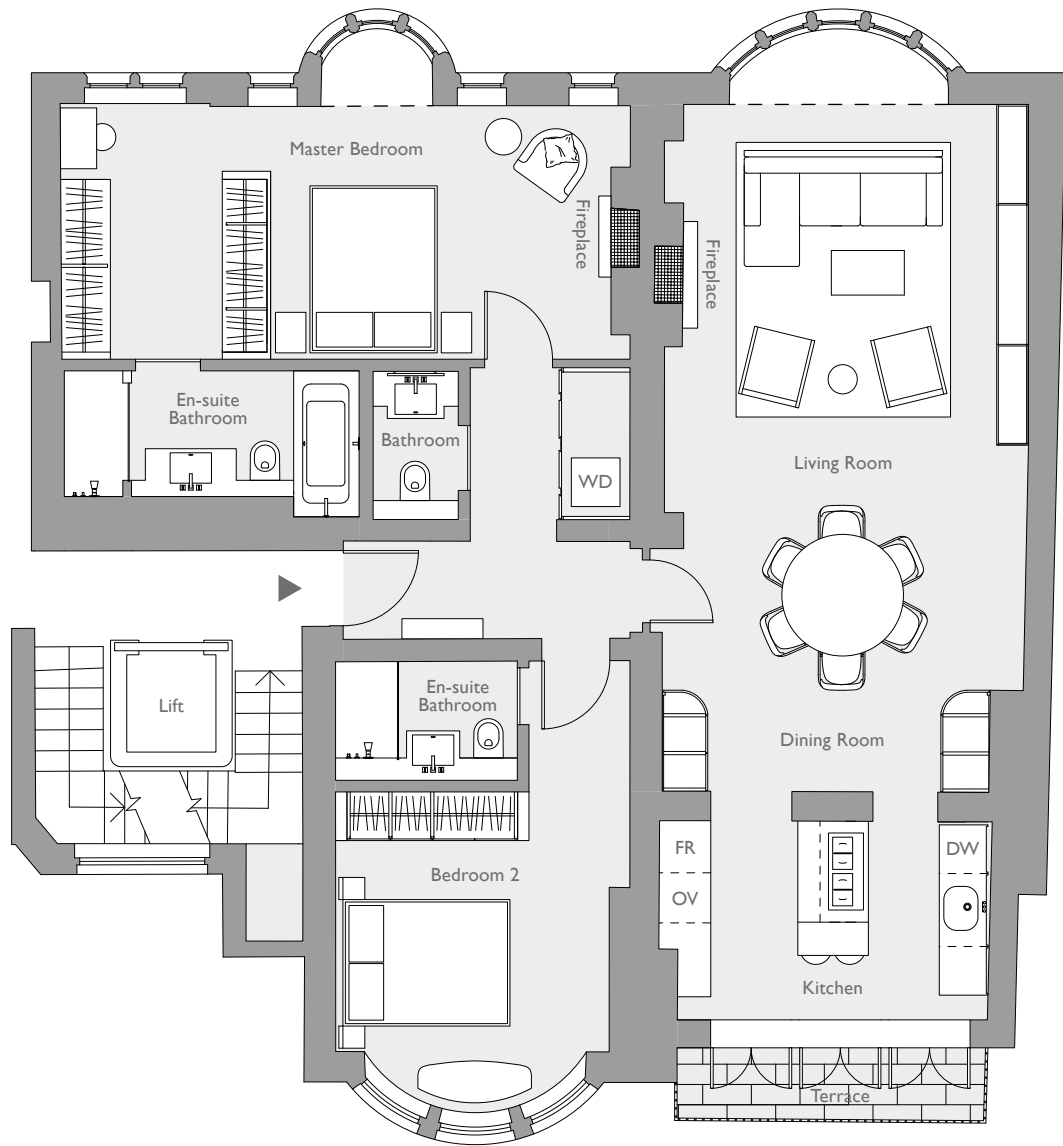
FR Fridge OV Oven WR Wine WD Washer Dryer C Cupboard DW Dishwasher

Disclaimer These particulars do not form part of any offer or contract and must not be relied upon as statements or representations of fact. These are illustrations to show the layout of the accommodation only. Any areas, measurements or distances are approximate.



2/6

3/6



Apartment 2 – Second Floor

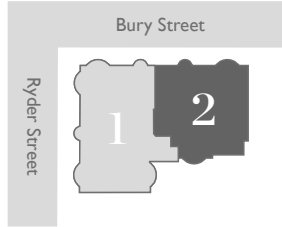


2 Bed / 2.5 Bath / Terrace

Internal Area	112m ²	1,209ft ²
---------------	-------------------	----------------------

FR Fridge OV Oven WD Washer Dryer DW Dishwasher

Disclaimer These particulars do not form part of any offer or contract and must not be relied upon as statements or representations of fact. These are illustrations to show the layout of the accommodation only. Any areas, measurements or distances are approximate.



Apartment 3 – Third Floor

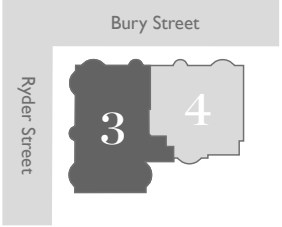


3 Bed / 2 Bath / Terrace

Internal Area	139m ²	1,492ft ²
---------------	-------------------	----------------------

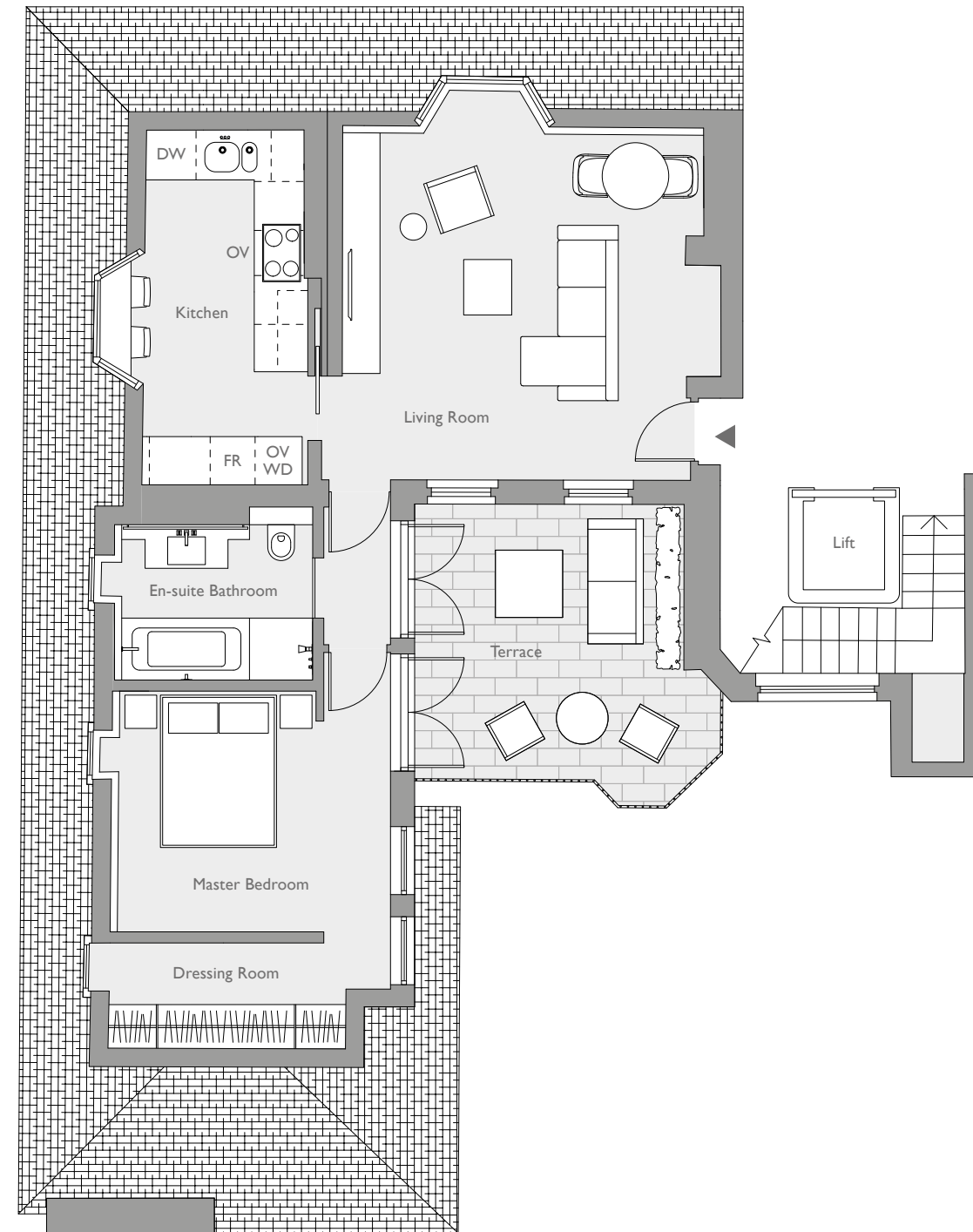
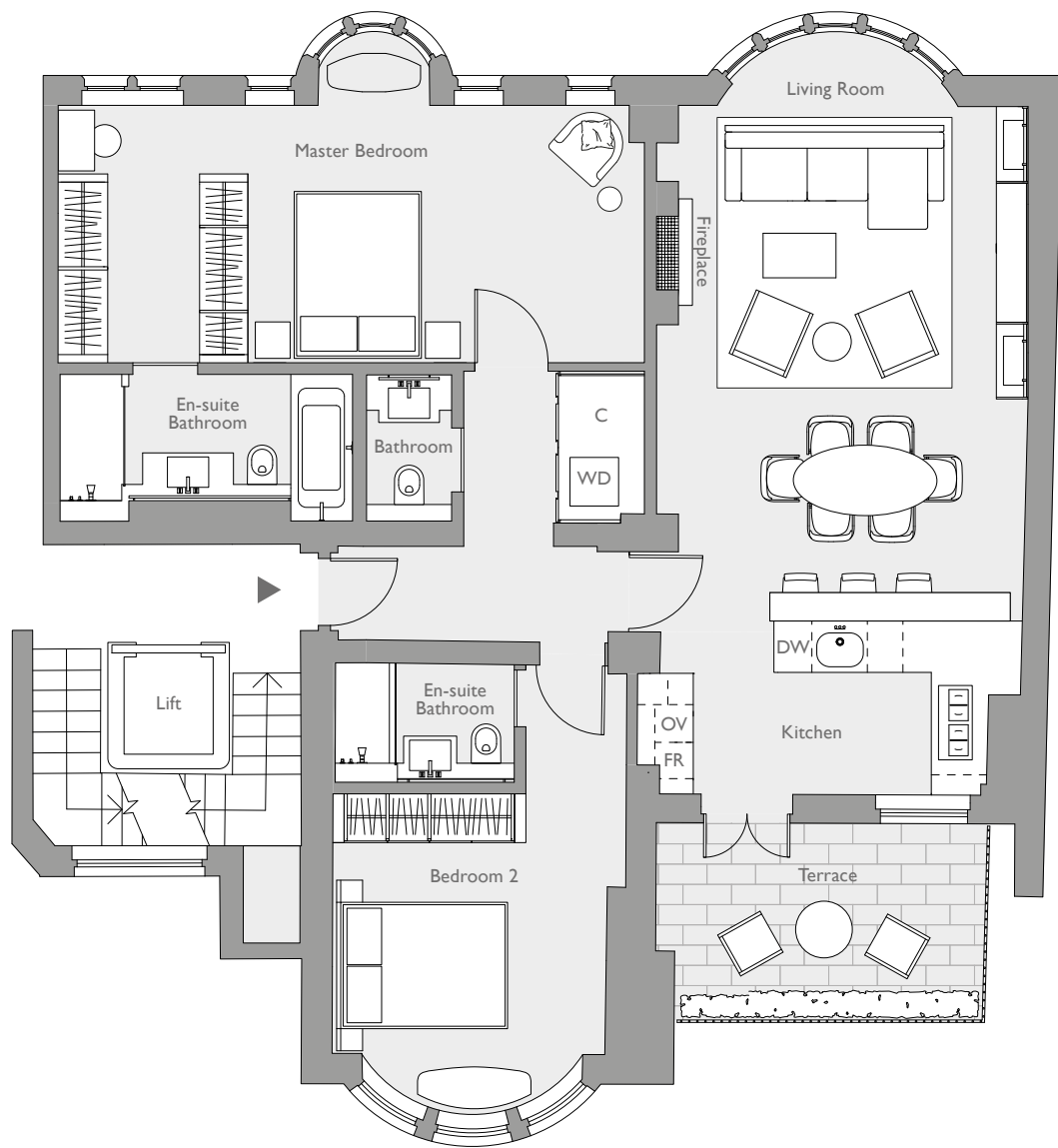
FR Fridge OV Oven WR Wine WD Washer Dryer C Cupboard DW Dishwasher

Disclaimer These particulars do not form part of any offer or contract and must not be relied upon as statements or representations of fact. These are illustrations to show the layout of the accommodation only. Any areas, measurements or distances are approximate.



4/6

5/6



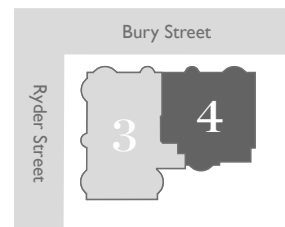
Apartment 4 – Third Floor

2 Bed / 2.5 Bath / Terrace

Internal Area	105m ²	1,130ft ²
---------------	-------------------	----------------------

FR Fridge OV Oven WD Washer Dryer C Cupboard DW Dishwasher

Disclaimer These particulars do not form part of any offer or contract and must not be relied upon as statements or representations of fact. These are illustrations to show the layout of the accommodation only. Any areas, measurements or distances are approximate.



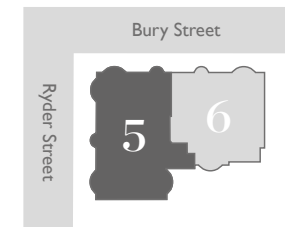
Apartment 5 – Fourth Floor

1 Bed / 1 Bath / Terrace

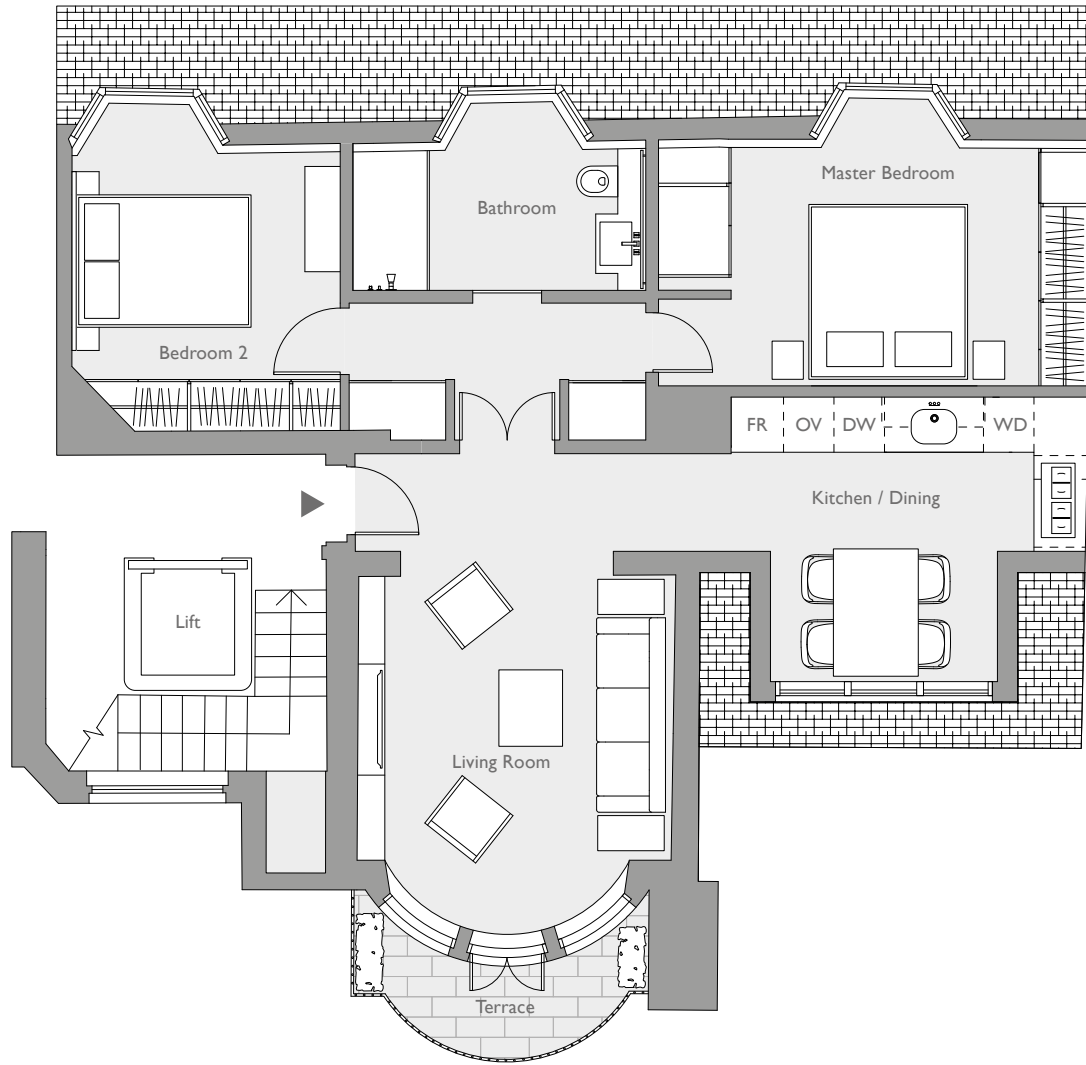
Internal Area	67m ²	720ft ²
---------------	------------------	--------------------

FR Fridge OV Oven WD Washer Dryer DW Dishwasher

Disclaimer These particulars do not form part of any offer or contract and must not be relied upon as statements or representations of fact. These are illustrations to show the layout of the accommodation only. Any areas, measurements or distances are approximate.



6/6



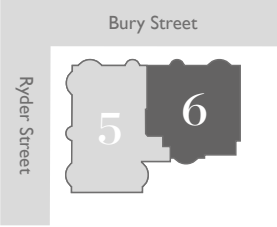
Apartment 6 – Fourth Floor

2 Bed / 1 Bath / Terrace

Internal Area	73m ²	784ft ²
---------------	------------------	--------------------

FR Fridge OV Oven WD Washer Dryer DW Dishwasher

Disclaimer: These particulars do not form part of any offer or contract and must not be relied upon as statements or representations of fact. These are illustrations to show the layout of the accommodation only. Any areas, measurements or distances are approximate.



Frans Snyders (1579–1657)
Still Life with a basket of fruit and squirrel (detail)
Oil on canvas, 37 x 64 inches. Artwork supplied by Colnaghi Gallery,
26 Bury Street, St James's, London SW1Y 6AL



Lettings Contacts

JLL

174 Brompton Road
London SW3 1HP
T +44 (0)20 7306 1630
lettingsknightsbridge@eu.jll.com

Ayrton Wylie

16 Lower Belgrave Street
London SW1W 0LN
T +44 (0)20 7730 4628
enquiries@ayrtonwylie.com

Disclaimer

Misrepresentation Act. These particulars are prepared for the guidance only of the prospective owners, tenants and occupiers. They are intended to give a fair overall description of the property but are not intended to constitute part of an offer or contract. Any information contained herein (whether in the text, plans or photographs) is given in good faith and should not be relied upon as being a statement or representation of fact. Nothing in these particulars shall be deemed to be a statement that the property is in good working condition or otherwise nor that any services or facilities are in good working order. Any areas, measurements or distances referred to herein are approximate only. Descriptions of a property are inevitably subjective and the descriptions contained herein are used in good faith as an opinion and not by way of statements of fact. Neither The Crown Estate nor any of its employees have any authority to make or give any warranty whatever in relation to this property. All images and photographs are for illustrative purposes only. Adjoining buildings may not be shown. Images are not intended to be relied upon for, nor to form part of, any contract unless specifically incorporated in writing into the contract.

Designed by Wordsearch.

