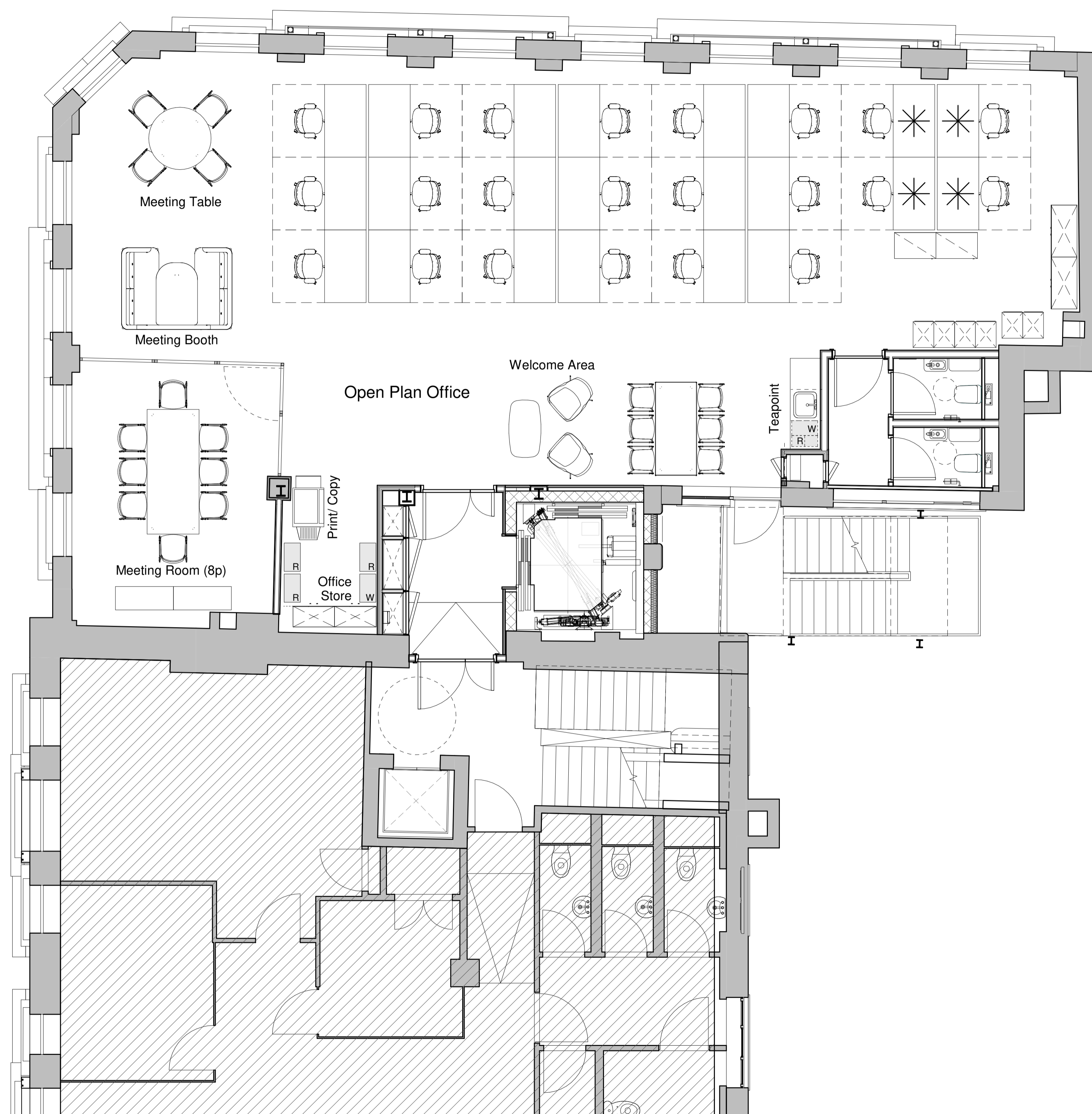


DO NOT SCALE THIS DRAWING

Contractors are to check all dimensions prior to commencement on site and notify the architect of any errors, omissions, or discrepancies.

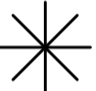
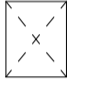
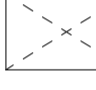

TateHindle Limited retain copyright of this drawing. It may not be copied, altered or reproduced in any way without their written authority.



- 22 no. open plan desks
- 1 no. 8p meeting room
- 1 no. 4p meeting booth
- 1 no. 4p meeting table
- 1 no. waiting area
- 1 no. staff teapoint
- 1 no. staff breakout

- 12 linear m of storage
- 6 no. 4-high lockers:
- 24 no. total lockers
- 1 no. Coats stand
- Under-sink waste bin

LEGEND:

-  Sit-stand desk
-  4-high locker unit
-  3-high storage unit
-  5-high storage unit

Rev	Description	Date	Checked
1	First Issue	26/05/20	JMH

FOR INFORMATION

Client
The Crown Estate

Project
12 Little Portland Street

Drawing
Proposed Third Floor FF&E Layout

Scale	Drawn	Date	Checked
1 : 50	NA	26/05/20	JMH

Project no.	Drg	Revision
14989	A - (72) - 503	

tatehindle

TateHindle Limited
1 Lindsey Street
Smithfield
London EC1A 9HP
T 020 7332 4850
mail@tatehindle.co.uk
www.tatehindle.co.uk