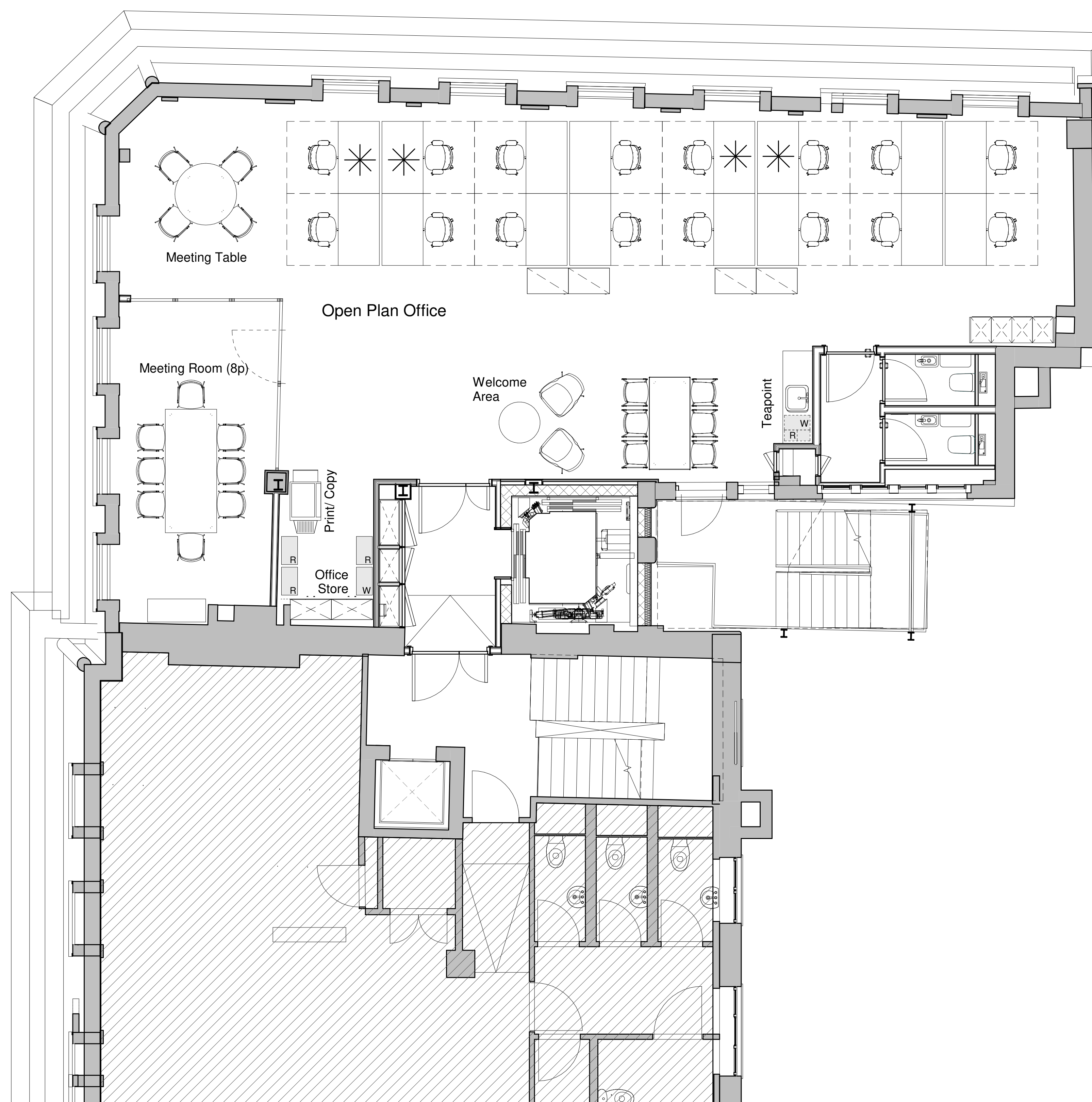


DO NOT SCALE THIS DRAWING

Contractors are to check all dimensions prior to commencement on site and notify the architect of any errors, omissions, or discrepancies.

TateHindle Limited retain copyright of this drawing. It may not be copied, altered or reproduced in any way without their written authority.



- 16 no. open plan desks
- 1 no. 8p meeting room
- 1 no. 4p meeting table
- 1 no. waiting area
- 1 no. staff teapoint
- 1 no. staff breakout

- 8 linear m of storage
- 4 no. 4-high lockers:
- 16 no. total lockers
- 1 no. Coats stand
- Under-sink waste bin

**LEGEND:**

- Sit-stand desk
- 4-high locker unit
- 3-high storage unit
- 5-high storage unit

Rev	Description	Date	Checked
	First Issue	26/05/20	JMH

Status  
**FOR INFORMATION**

Client  
The Crown Estate

Project  
12 Little Portland Street

Drawing  
Proposed Fifth Floor FF&E Layout

Scale	Drawn	Date	Checked
1 : 50	NA	26/05/20	JMH

Project no.	Drg	Revision
14989	A - (72) - 505	

**tatehindle**

TateHindle Limited  
1 Lindsey Street  
Smithfield  
London EC1A 9HP  
T 020 7332 4850  
mail@tatehindle.co.uk  
www.tatehindle.co.uk